




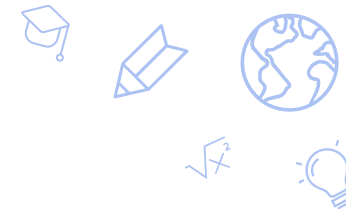




SLAM! Nevada

Jill Cribari, Principal K-5
Dan Triana, Lead Principal K-12
Phil Bateman, Board President





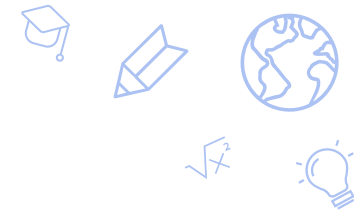
School Information

- Grade K-12
 - SLAM Nevada is a comprehensive K-12 charter school
 - SLAM Nevada K-5 is rated a 1 star, ATSI school for 2022-2023

- SLAM serves a diverse population:

10.8% White	10.5% Black/African American	61.2% Hispanic/Latino
2.8% Asian	3.3% Pacific Islander	11.1% Two or more

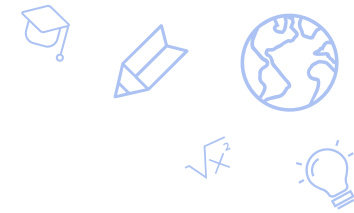
- Other relevant characteristics or information
 - SLAM expanded to K-5 in 2021-2022 enrolling 500 students.
 - K-5 enrollment increased to 630 in 2022-2023



Academic Goal(s)

School Performance Plan Student Success Goal:

- Increase the percentage of all students proficient in ELA from 31% Spring 2023 to 45% Spring 2024 as measured by SBAC.
- Increase the percentage of all student proficiency in Math from 30.5% in Spring 2023 to 40% in Spring 2024 as measured by SBAC.



Measurable Action Steps

- Tighten Instruction
 - Increase number of administrative observations completed during Tier 1 and Tier 2 instruction in both Reading and Math to once per week per teacher
 - Provide targeted support from coaches or grade level leads for specific teachers who are struggling with Tier 1 and Tier 2 instruction in ELA and/or Math
- Inspect Data
 - Review student data weekly utilizing iReady reports in ELA and Math
 - Review student data monthly utilizing fluency data collected through easyCBM
- Respond to Data
 - Ensure students are being taught targeted skills that fit their needs based on data from iReady and other reliable sources
 - Increase number of staff pulling students for targeted instruction
 - Increase number of minutes students receive targeted instruction

Thank you!

charterschools.nv.gov

